



* All images in this datasheet are for illustrative purposes only.

Direct View LED LFCG Series

Floor LED Display



High Durability



Excellent Usability



Easy Installation and Maintenance



Interactive Touch Screen

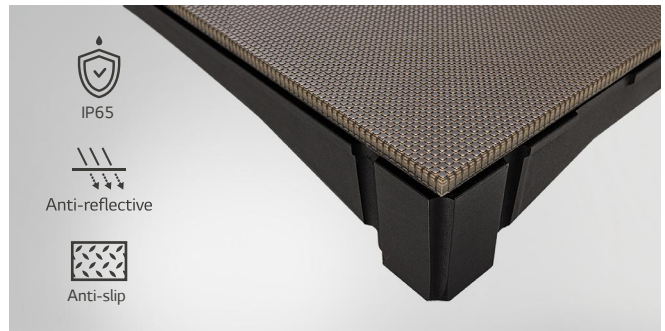
LFCG

Pixel Pitch	3.91 mm
Brightness	Up to 3,000 nits
Weight per Cabinet	33.3 lbs. / 15.1 kg
Service Access	Front
IP Rating	IP65



High Durability

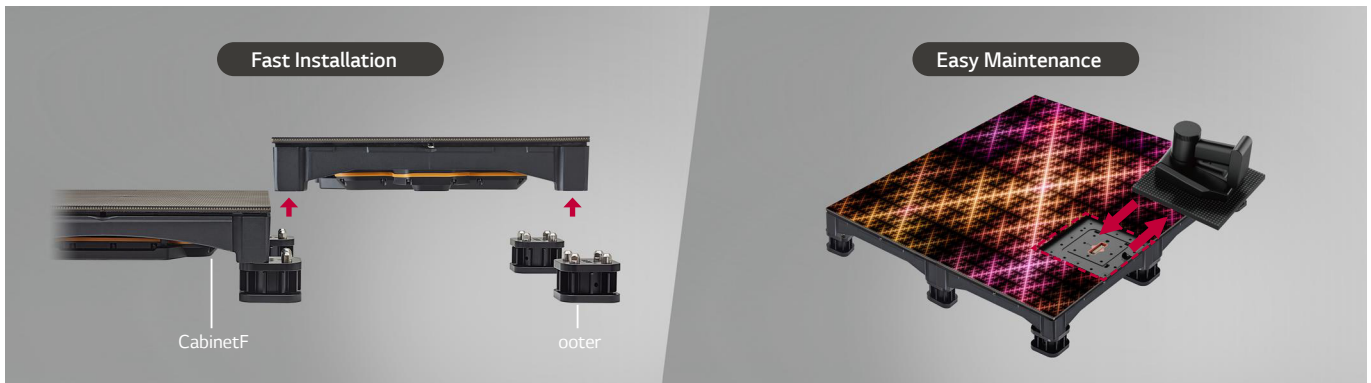
LFCG is a unique display installed on the floor with high durability designed to load up to 2,500 kg/sqm.



Excellent Usability

Surface durability* with IP65 protection and surface visibility with 5,000:1 contrast ratio help create a high-usable DVLED floor.

* As the surface is made of polycarbonate, it may be susceptible to scratches (especially against metal).



Easy Installation and Maintenance

Its simple product structure allows for easy installation and quick maintenance. You can quickly deploy and connect the cabinets with the foot support system without any tools. A simple flush control mechanism design is applied to keep the height level regardless of floor type. In addition, magnets attached to the LED module allow for easy maintenance, and hot-swapping is able during the display operation.



Interactive Touch Screen

Using sensor detection, the interactive touch screen can detect and react to movements, enabling response to the content on the LED display. This function is available by connecting with the LCIN010 controller. Our Flash Show Software enables you to set up your display configuration. It offers Flash & Game, Exhibition, Module testing, and Data forward modes. In addition, you can upload your own dynamic video content to LFCG panels through the Exhibition mode.

SPECIFICATIONS

LFCG09-GN

Physical Parameters	Pixel Configuration	3 in 1 SMD
	Pixel Pitch (mm)	3,906
	Module Resolution (W x H)	64 × 64
	Module Dimensions (W x H, in. / mm)	9.8 x 9.8 in. / 250 × 250 mm
	Weight per Module (lbs. / kg)	1.9 lbs. / 0.90 kg
	No. of Modules per Cabinet (W x H)	2 × 2
	Cabinet Resolution (W x H)	128 × 128
	Cabinet Dimensions (W x H x D, in. / mm)	19.6 x 19.6 x 3.3 in. 500 × 500 × 84.5 mm
	Cabinet Surface Area (ft ² / m ²)	2.7 ft ² / 0.250m ²
	Weight per Cabinet (lbs. / kg)	33.3 lbs. / 15.1 kg
	Weight per Square Meter (kg/m ²)	64.0
	Physical Pixel Density (pixels/m ²)	65,536
	Flatness of Cabinet (mm)	±0.5
	Cabinet material	Die Casting Aluminum
	Service access	Front
Optical Specifications	Max Brightness (After Calibration, nits)	3,000
	Color Temperature (K)	3,500-9,000
	Visual Viewing Angle (Horizontal)	160°
	Visual Viewing Angle (Vertical)	160°
	Brightness Uniformity	≥97%
	Color Uniformity	±0.003 Cx,Cy
	Contrast Ratio	5,000:1
	Processing Depth (bit)	14
Electrical Specifications	Max Power Consumption per Cabinet (W)	240
	Avg. Power Consumption per Cabinet (W)	80
	Max Power Consumption (W/m ²)	960
	Power Supply (Vac)	100 to 240
	Frame Rate (Hz)	50 / 60
	Refresh Rate (Hz)	3,840
Operational Specifications	Operating Temperature (°F / °C)	14 to 113 / -10 to +45
	Operating Humidity	0-80% RH Non-condensing
	IP Rating Front / Rear	IP65 / IP65
Warranty & Other	Warranty	3 Year Limited
	Regulatory	CE, FCC, ETL
	Controller	LCIN010

* Specifications are subject to change without notice. Please make sure to check the product manual for details about product usage.